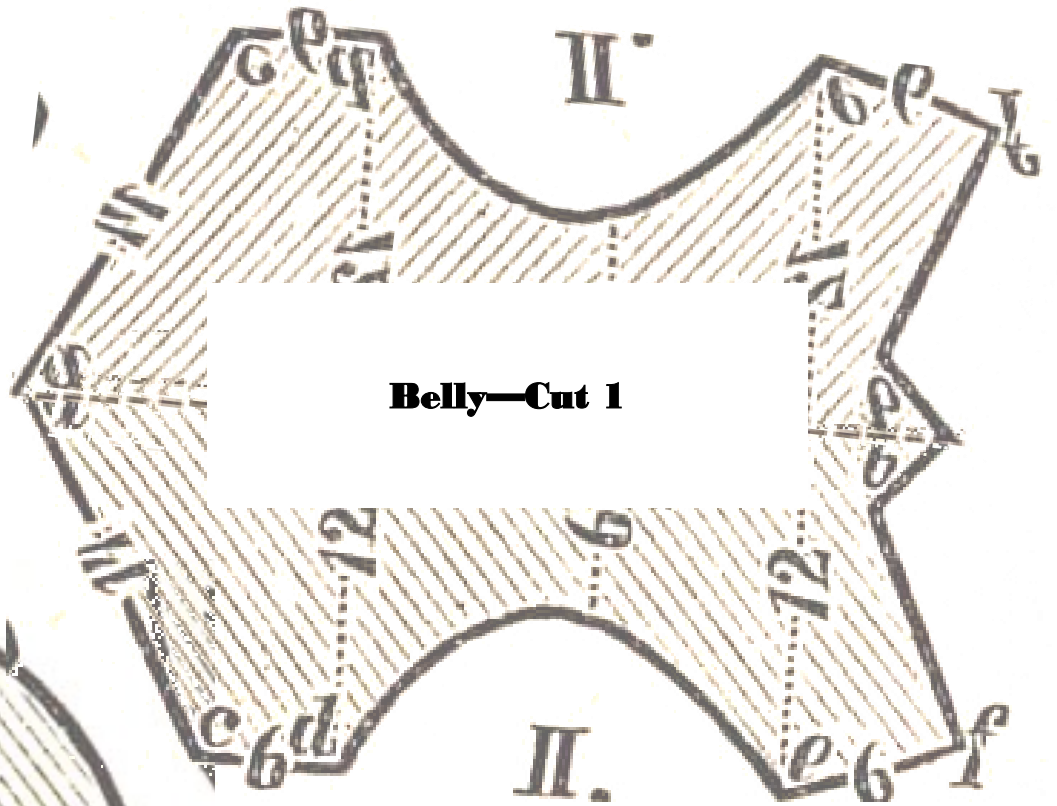
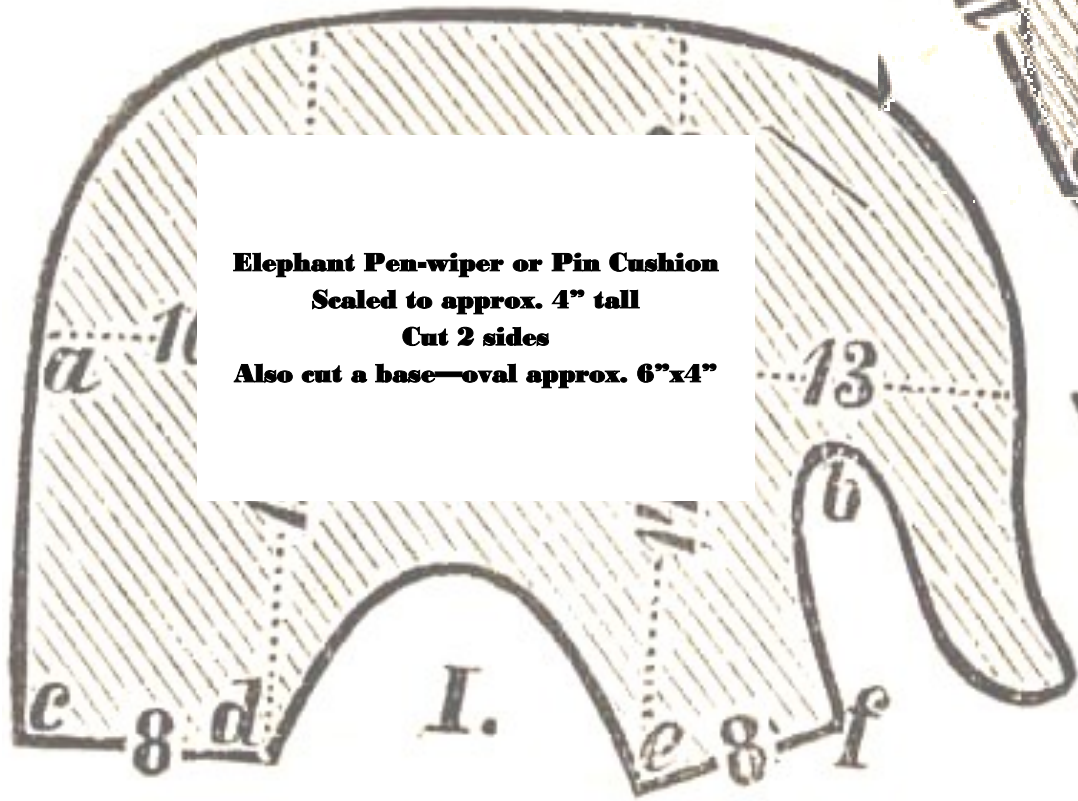


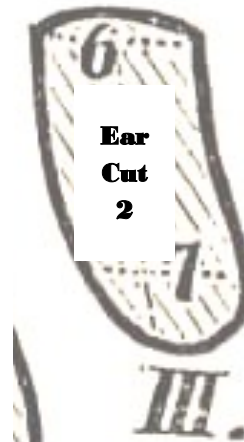
Saddle cut 1 or 2 layers



Belly—Cut 1



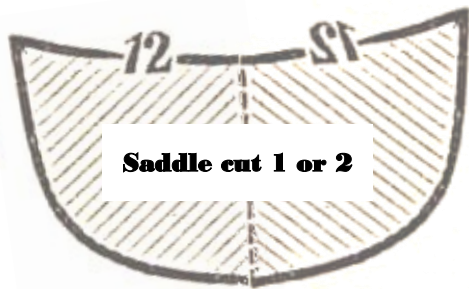
Elephant Pen-wiper or Pin Cushion
 Scaled to approx. 4" tall
 Cut 2 sides
 Also cut a base—oval approx. 6"x4"



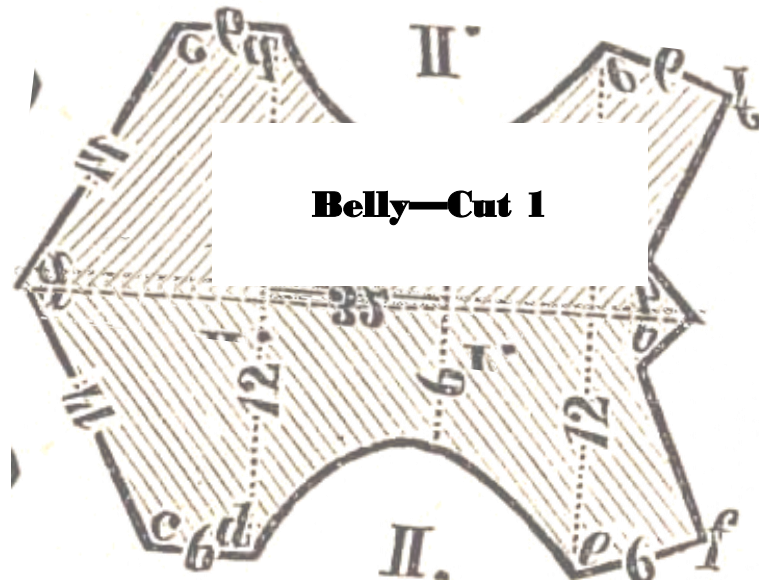
**Ear
 Cut
 2**



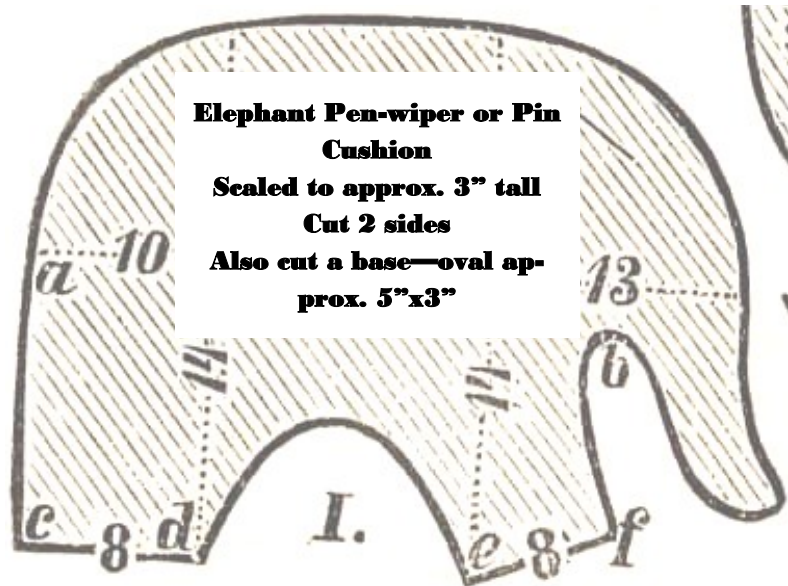
Foot 4



Saddle cut 1 or 2



Belly—Cut 1



Elephant Pen-wiper or Pin Cushion

Scaled to approx. 3" tall

Cut 2 sides

Also cut a base—oval approx. 5"x3"



**Ear
Cut
2**



Foot